

The Annie E. Casey Foundation

FamilytoFamilyInitiative



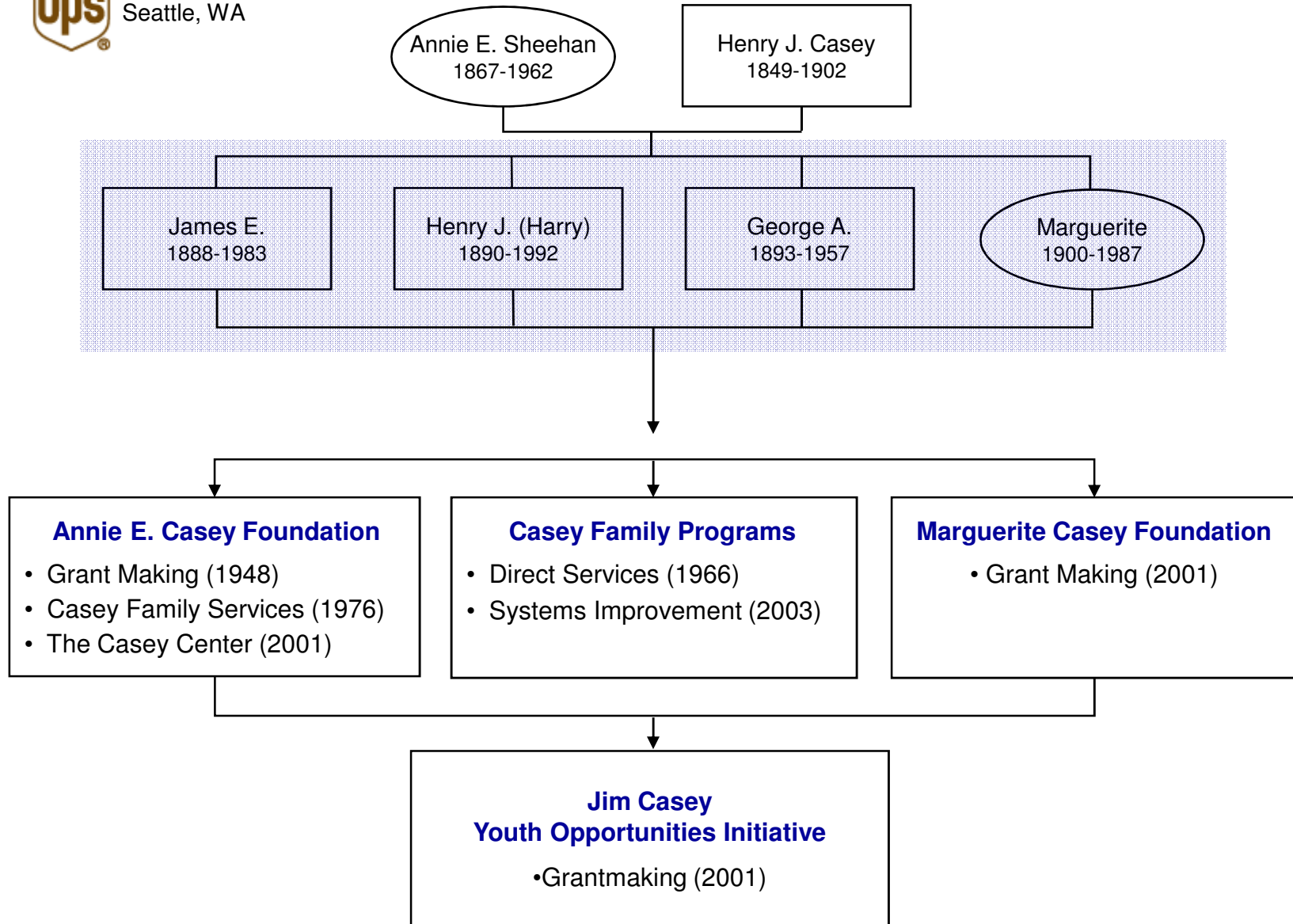
Racial Disparities in Child Welfare: What Do We Know & What Can We Do?

Romaine Serna
Deputy Director, Protective Services,
New Mexico CYFD

Gretchen Test
Program Associate
Annie E. Casey Foundation

Race Matters Conference, May 17, 2006
Albuquerque, New Mexico

The Casey Family Connections





What We Will Talk About

- ❖ Partnership Between AECF & NM
- ❖ What do we mean by racial disparities in child welfare?
- ❖ What do we know about the experiences of children of color in the New Mexico child welfare system?
- ❖ What can we do to reduce racial disparities?



Family to Family: A Partnership Between New Mexico and the Annie E. Casey Foundation

Developing a child welfare reform
initiative that is becoming a movement
for change.

Family to Family began in 1992.



Anchor and Network Sites

Anchor Sites

Midwest/Northeast

Wayne County (Detroit)
 Macomb County, MI
 NYC
 Cuyahoga County
 (Cleveland)

Southeast

Shelby County
 (Memphis)
 Wake County (Raleigh)
 Guilford County
 (Greensboro, NC)
 Jefferson County
 (Louisville)

Mountain West

Denver County
 Maricopa County
 (Phoenix)

Pacific

California counties: Los Angeles, Orange, Fresno, San Francisco, Alameda



Potential Network Sites

Midwest/Northeast

Rock Island/Peoria, IL
 Cook County, IL
 Michigan rollout counties
 Maryland counties
 DC

Southeast

Fulton County (Atlanta)
 St. Louis City
 Northern Kentucky region
 Mecklenburg County, NC
 (Charlotte)
 Durham County, NC
 Davidson County (Nashville)
 Midcumberland Region, TN

Mountain West

Albuquerque, NM
 El Paso County, CO
 Colorado rollout counties

Pacific

Washington (3 regions)
 Oregon (3 regions)
 Anchorage
 Additional California counties



We believe that . . .

- ❖ A child's safety is paramount.
- ❖ Children belong in families.
- ❖ All children deserve a permanent family.
- ❖ Families need strong communities.
- ❖ Public child-welfare systems must partner with the community and with other systems to achieve better outcomes for children.
- ❖ True reform takes a long time.



How We Work with Sites: 4 Core Strategies of Family to Family

- ❖ Team Decision Making
- ❖ Recruiting, Developing and Supporting Resource Families
- ❖ Building Community Partnerships
- ❖ Self-Evaluation



9 Outcomes of Family to Family

We are committed to improving results for children and families in the child welfare system, with an emphasis on safety, stability, permanence, and well-being including . . .

- ❖ Reducing any disparities associated with **race/ethnicity**, gender, or age in each of the outcomes listed below.
- ❖ Reducing the number and rate of children placed away from their birth families.
- ❖ Among children coming into foster care, increasing the number and rate at which children are placed in their own neighborhoods or communities.
- ❖ Reducing the number of children served in institutional and group care and shifting resources from institutional and group care to kinship care, family foster care, and family-centered services.
- ❖ Decreasing lengths of stay of children in placement.
- ❖ Increasing the number and rate of children reunified with their birth families.
- ❖ Decreasing the number and rate of children re-entering placement.
- ❖ Reducing the number of placement moves children in care experience.
- ❖ Increasing the number and rate of brothers and sisters placed together.



Family to Family in New Mexico

❖ **Involving Families & Youth In Decisionmaking:**

In New Mexico, the Team Decision Making Meeting is conducted for every child coming into temporary CYFD custody on a 48 hour hold. The TDMs involve extended families, social workers, service providers and neighborhood supporters who come together to make the best collective decision about child placement and family's service needs.

❖ **Building Community Partnerships:**

Zip Code 87108 in the Southeast Heights was selected as the first area to Build Community in the Family to Family Initiative. Over an 18 month period, 207 children were taken into department custody from that area and only one foster home serves the area. Bernalillo County is identifying more resource families in the area to keep children close to their schools, churches and support programs even if they must be removed from their parents. In addition, Bernalillo County is supporting programs to strengthen families so that children do not have to be removed.



Racial Disproportionality & Disparity: What Do We Mean?

Disproportionality exists when a group makes up a proportion of those in an event that is different than that same group's proportion of the population.

Disparity compares one group's experience to that of another group.



Racial Disproportionality: What Do We Know?

In almost every state, children of color are disproportionately represented in the child welfare system:

- African Americans overrepresented in 46 states;
- Latinos overrepresented in 6 states;
- Native American children overrepresented in 24 states.
- Asian American & Pacific Islander data varies by state.
- Data varies widely at the local level.
- Some of these children are immigrants or children of immigrants.



Racial Disparities: What Do We Know?

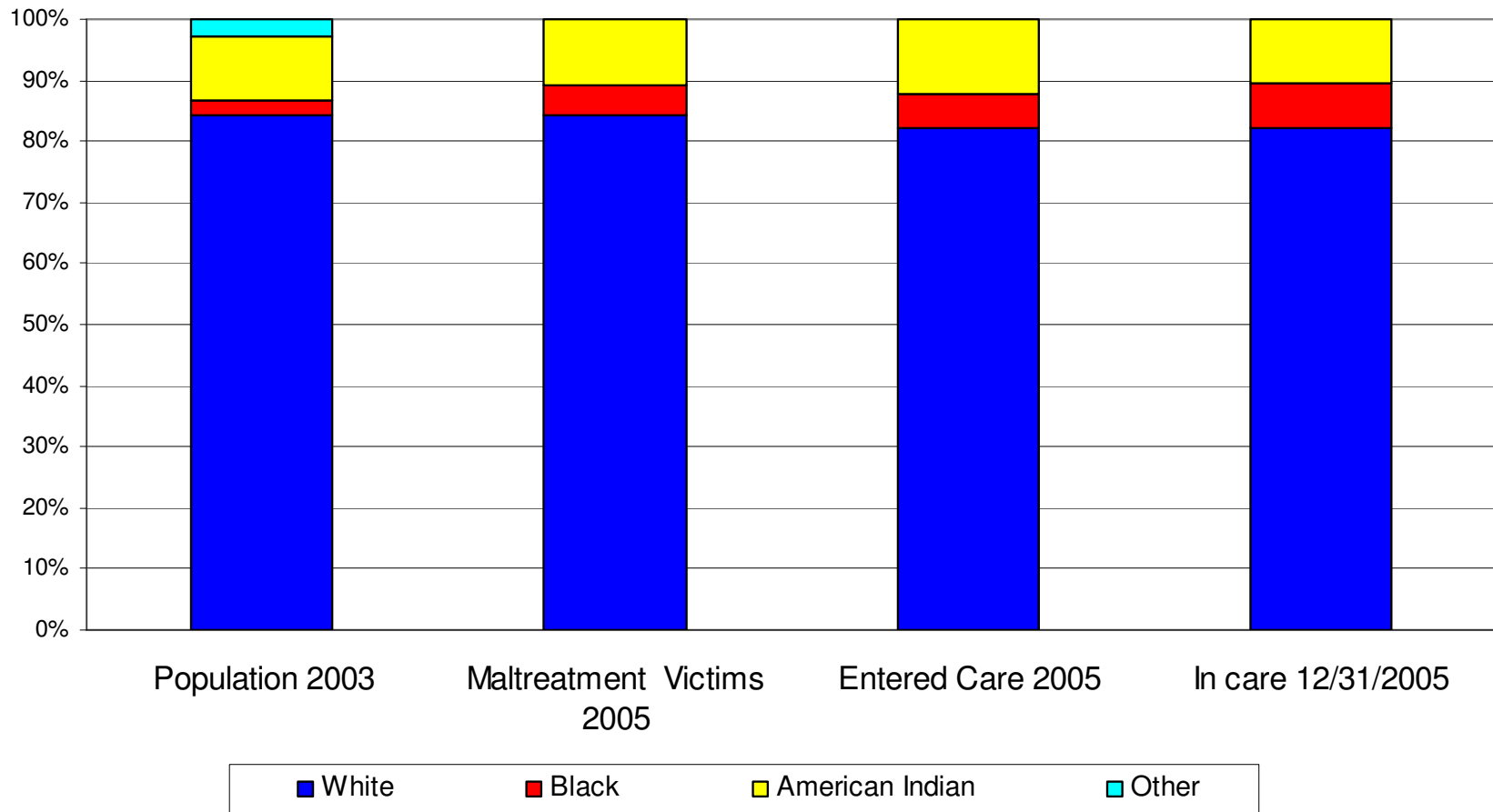
- ❖ In general, children of color, especially African American and Native American children, fare worse compared to whites when it comes to measures such as:
 - Placement in foster care
 - Length of stay in foster care
 - Number of moves in foster care
 - Length of time to permanency



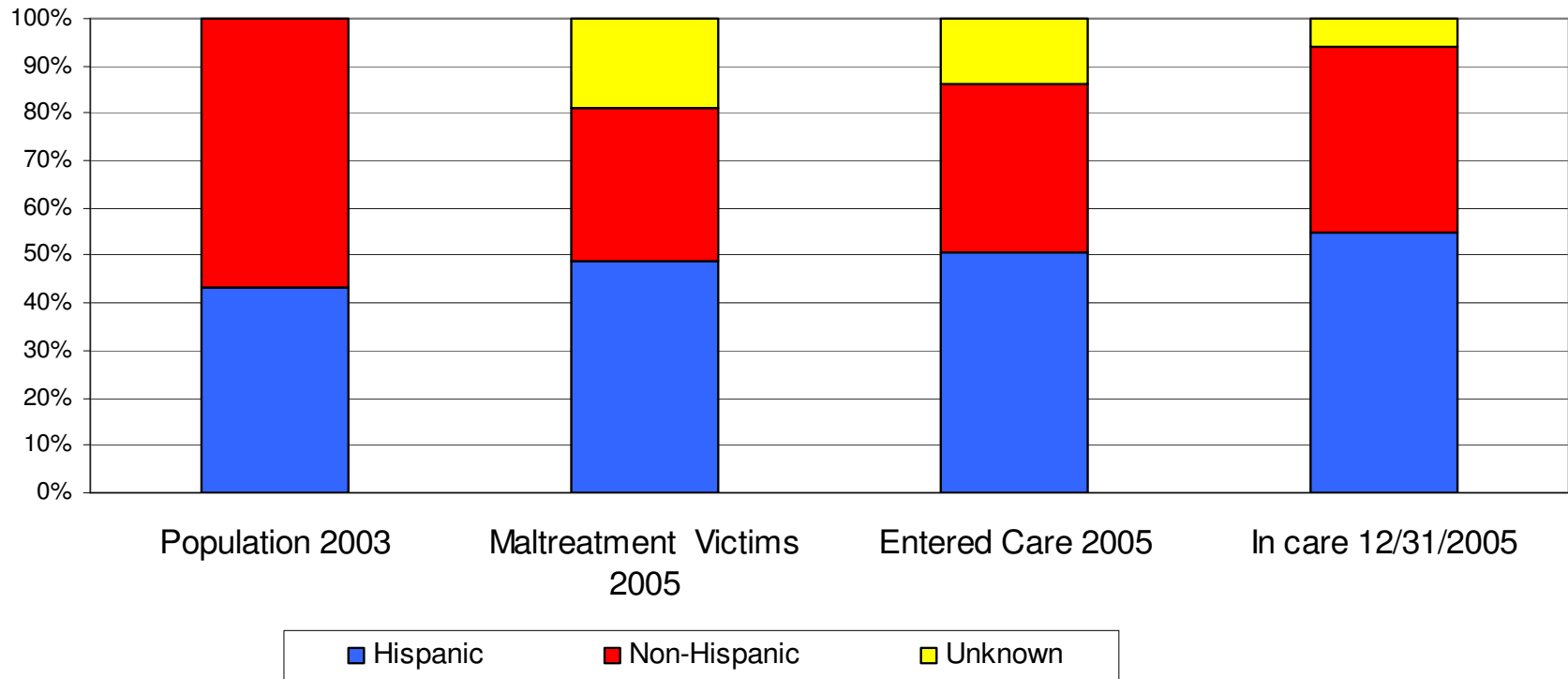
Racial Disparities in Child Welfare in New Mexico:

What Do We Know?

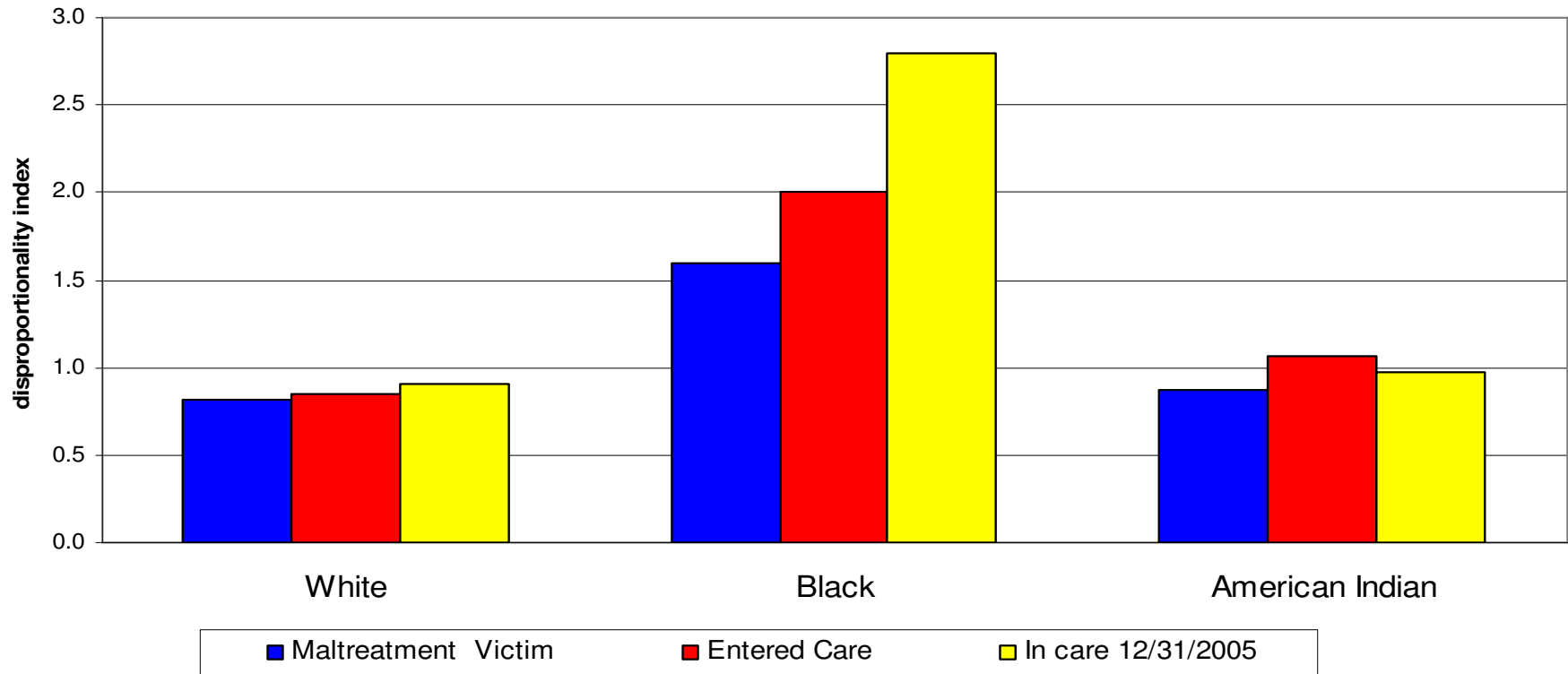
Race of Children Involved with Child Welfare System in NM at Different Decision Points



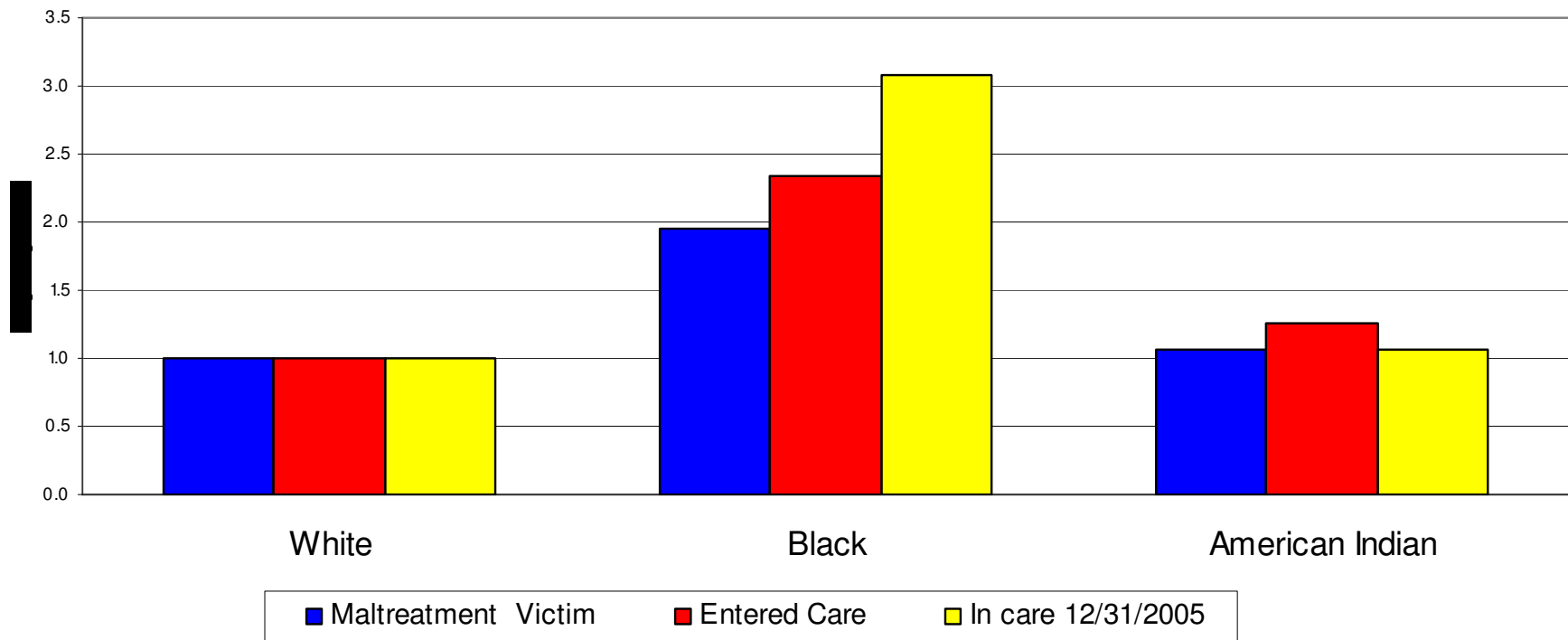
Ethnicity of Children Involved with Child Welfare System at Different Decision Points



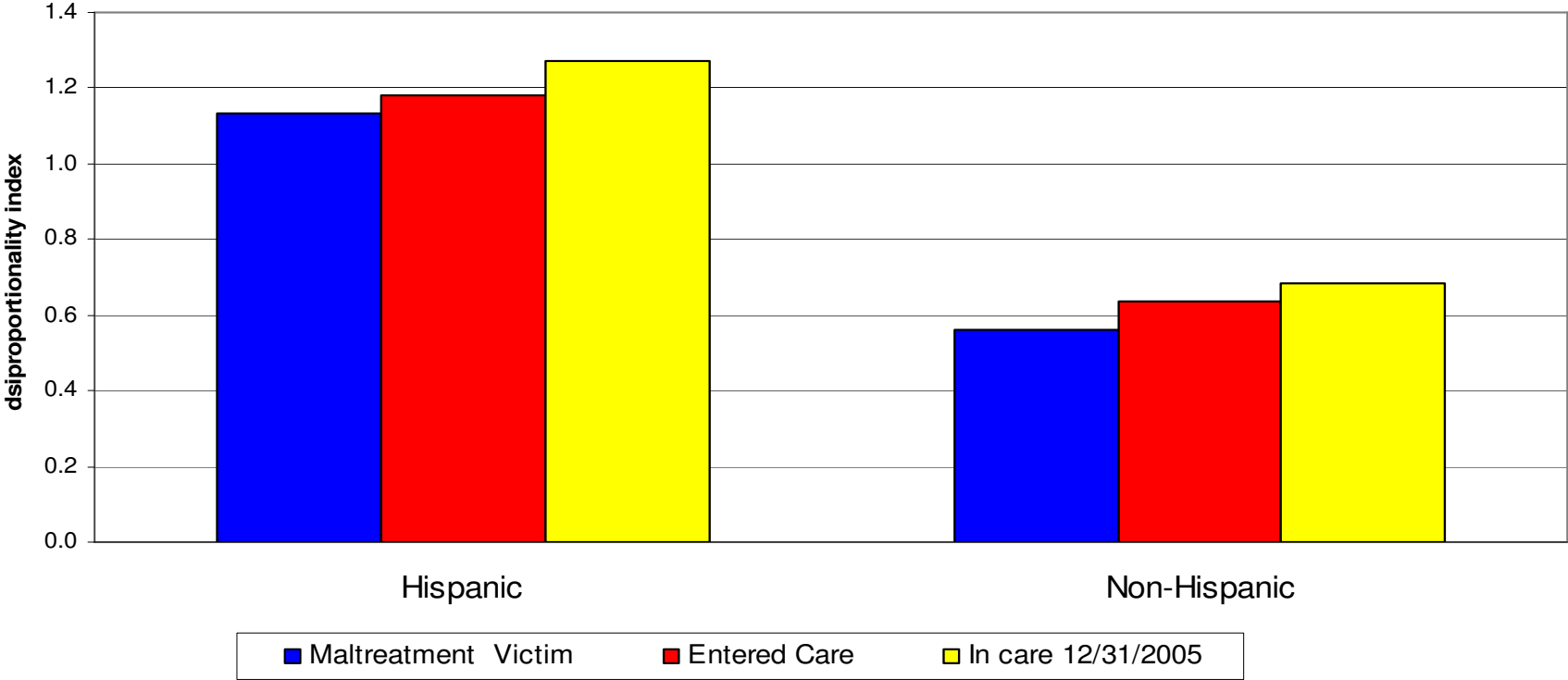
Racial Distribution Experiencing a Child Welfare Event Compared To Racial Percentage in Population (Disproportionality)



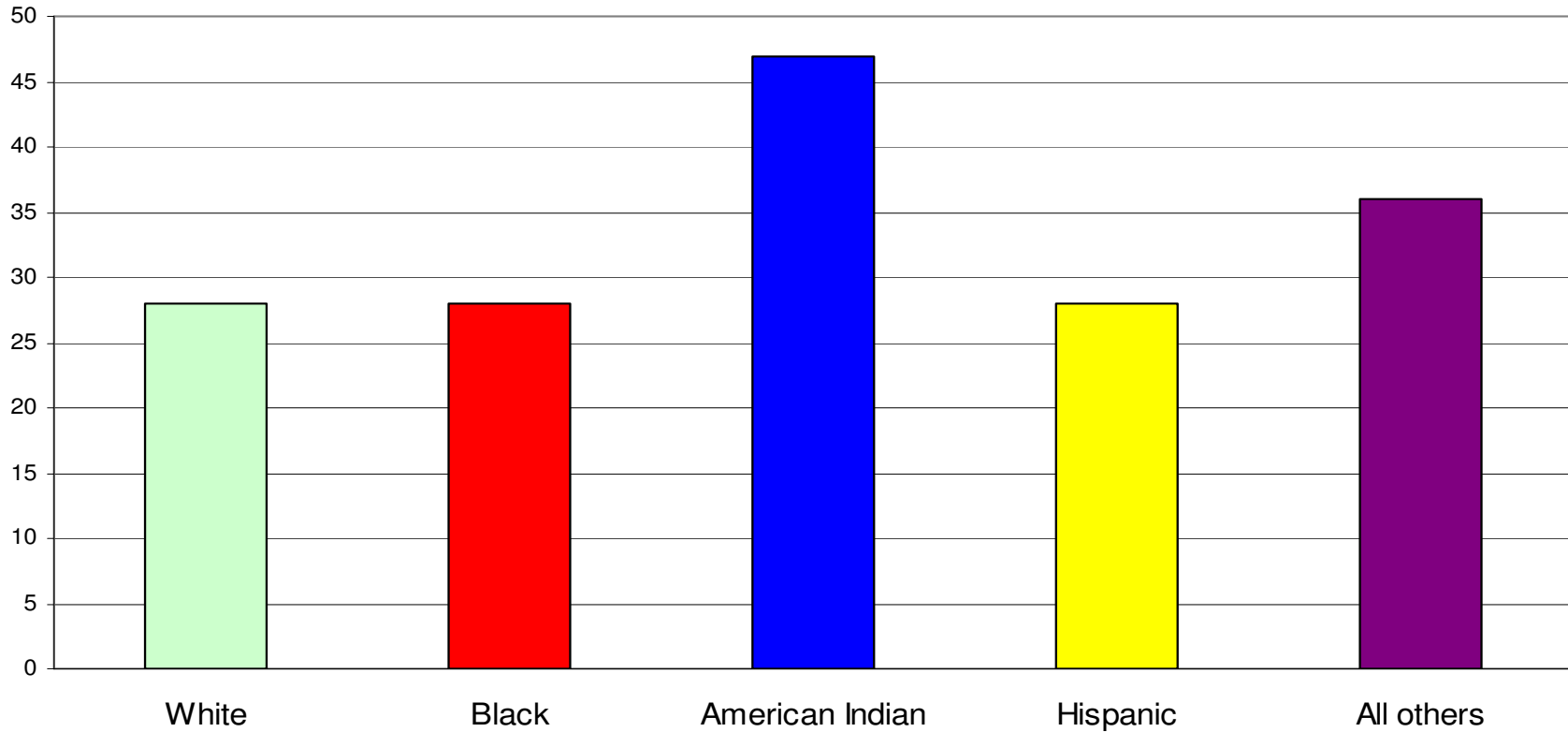
Comparative Likelihood of Experiencing a Child Welfare Event for Children of Color compared to White Children in NM (Disparity)



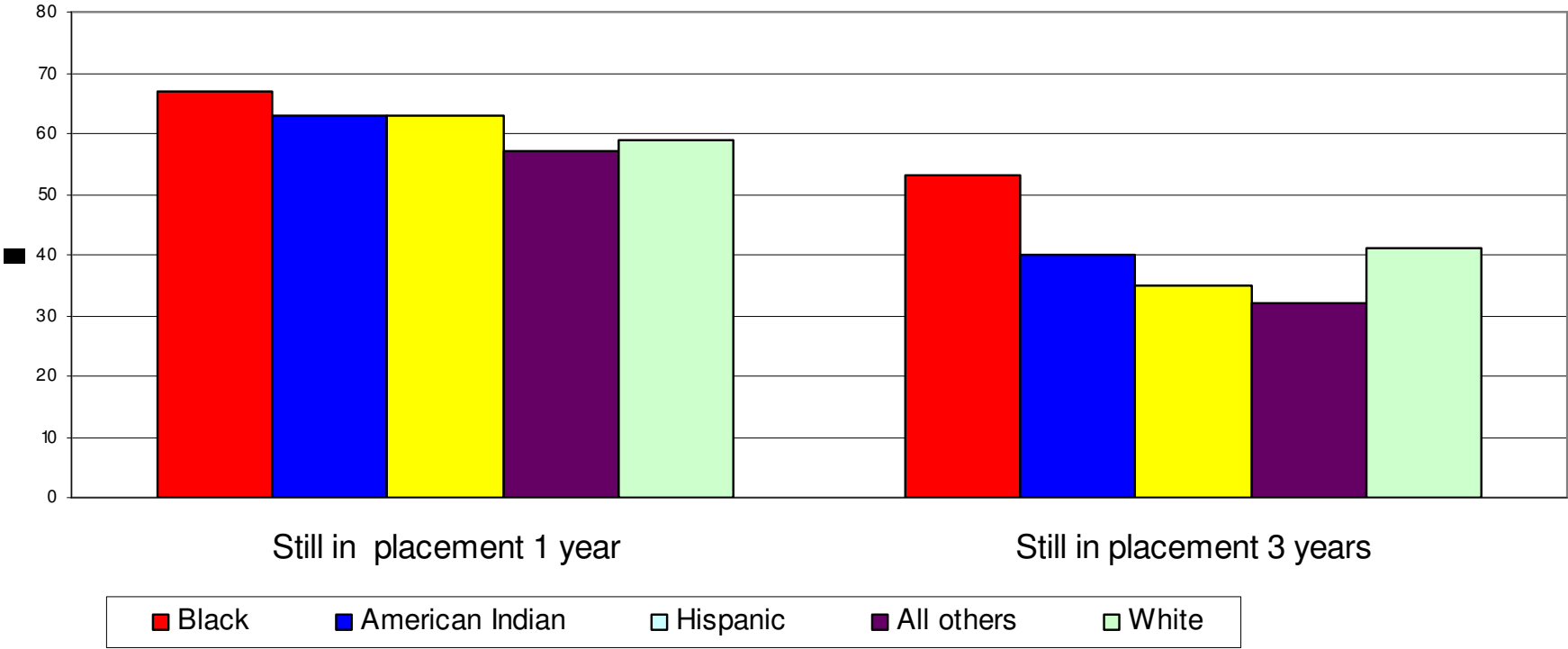
Distribution of Hispanic Children Experiencing a Child Welfare Event in NM 2005 Compared to Hispanic Population Percentage (Disproportionality)



Percentage of Children by Race who Entered Placement for First Time, 2001 - 2005, & Exited Out-of-Home Placement within 5 Days



Among Children Remaining in Placement at Least 30 Days
Percentage of Children by Race Still in Placement at 1 Year and 3 Years





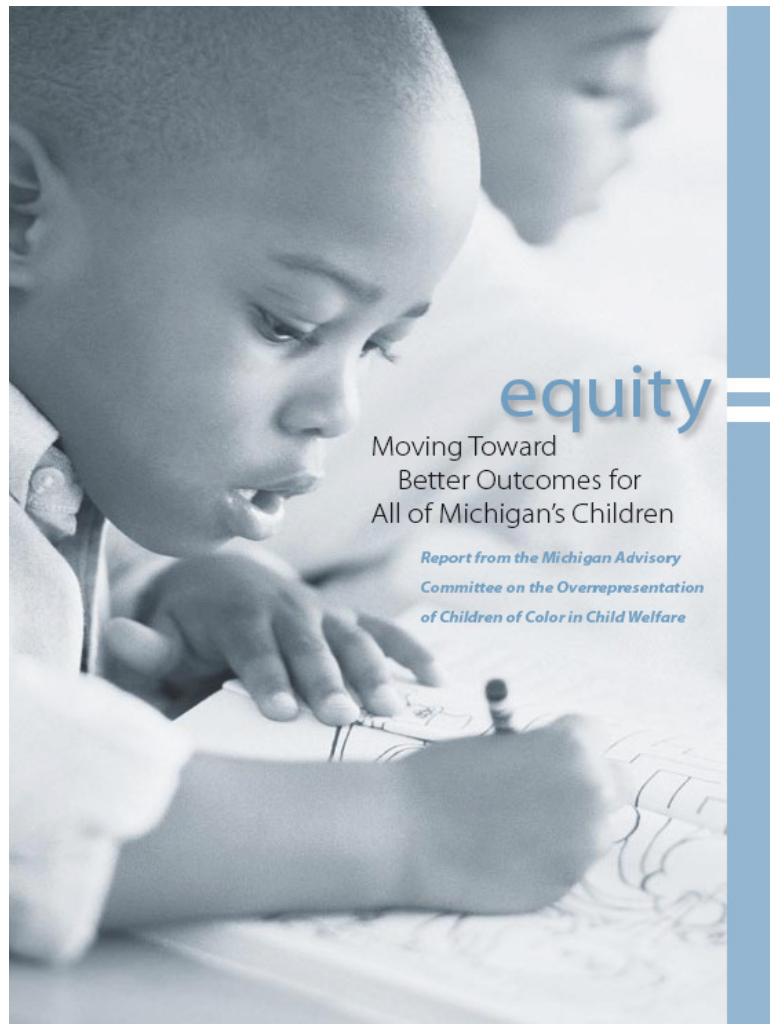
What Can We Do?

Don't Reinvent the Wheel - Examples from Communities Around the Country

- ❖ Iowa:
 - ❖ Return Our Children – grassroots parent and youth advocacy
- ❖ San Francisco:
 - ❖ County Wide Report to Board of Supervisors
 - ❖ Agency-wide Undoing Racism Training
- ❖ Wake County, North Carolina:
 - ❖ County Commissioners Funding Agency and Community Efforts
- ❖ Cleveland:



Michigan's Statewide Task Force



- ❖ Mandated by legislation
- ❖ Involved parents, youth, foster parents, judges, community advocates, child welfare agency staff, etc.
- ❖ Held 40 focus groups
- ❖ Made strong recommendations for change



Resources: National Efforts to Promote Racial Equity in Child Welfare

- ❖ Family to Family Initiative
- ❖ Casey Alliance for Racial Equity
- ❖ Casey Family Programs Breakthrough Series on Racial Disparities in Child Welfare
- ❖ National Organizations: National Indian Child Welfare Association, Black Administrators in Child Welfare, Race Matters Research Consortium, Child Welfare Organizing Project, etc.



What Can We Do? Some Ideas for Getting Started

- ❖ Examine the History of People of Color in the Community & Their Experiences with Child Welfare
- ❖ Analyze the data at key decision points
- ❖ Involve Parents, Youth & Other Community Members
- ❖ Know That This Work Is Difficult But Essential



What Can I Do? Start a Courageous Conversation One Person Can Make Change

“My husband was a man who hoped to be a Baptist preacher to a large, Southern, urban congregation. Instead, by the time he died in 1968, he had led millions of people into shattering forever the Southern system of segregation of the races.”

Coretta Scott King



Contacts & Resources

❖ Gretchen Test

Program Associate
Annie E. Casey Foundation
410-547-3678 or gtest@aecf.org
Contact Gretchen for links to reports, etc.

❖ Romaine Serna

Deputy Director, Protective Services,
New Mexico Children, Youth & Families Department
(505) 841-7885 or romaine.serna@state.nm.us

❖ Family to Family Website:

(Racial Disparities resource list coming soon)

www.aecf.org/initiatives/familytofamily